

AW2023/24 KNITWEARS

By

Zhejiang Springair Import&Export Co., Ltd





PANTONE
14-5002TCX
Silver

银雪草

寒冷的银色营造冷静的氛围，自带光泽感的色彩用于打造摩登未来科技感，能赋予单品奢华质感，也能满足人们对通勤和社交的场合穿衣的需求，实用性与装饰性并存，可以融入任何材质、品类的服装，为造型增添醒目的摩登感。



NATURAL COLORS



WARM COLORS

KEY TONE <Scarlet>



PANTONE
18-1559TCX
Red Alert

SPRINGAIR

LAST YEAR PREDICATION:

> Rainbow Stripes

> Colour Change Effect

> Fairilse

> Argyles

> Lounge Wear

> Co-ordinate Set

Rainbow Stripes



Hi-Street Looks



Colour Change Effect



Hi-Street Looks



Fairilse



Hi-Street Looks



Hi-Street Looks



Argyles



Hi-Street Looks



LOUNGE 7/11 WEAR



Hi-Street Looks



CO-ORDINATE SET



Hi-Street Looks



AW24
Supplementary

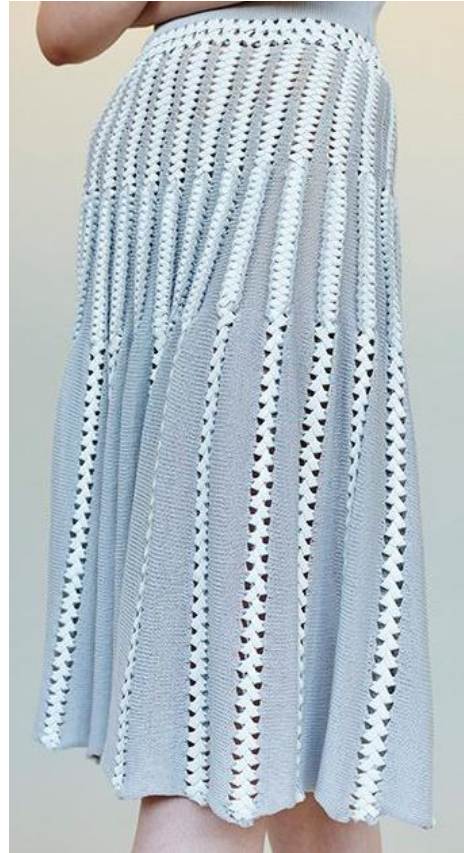
Crew or Shirt Collar Fitted Cardigan

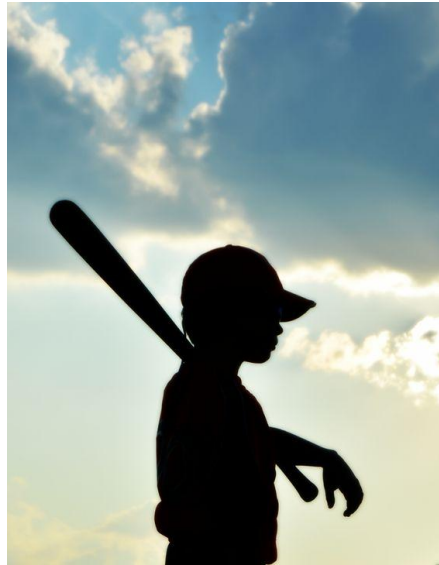


Waist Line Tops



Frilly Dress & Skirt



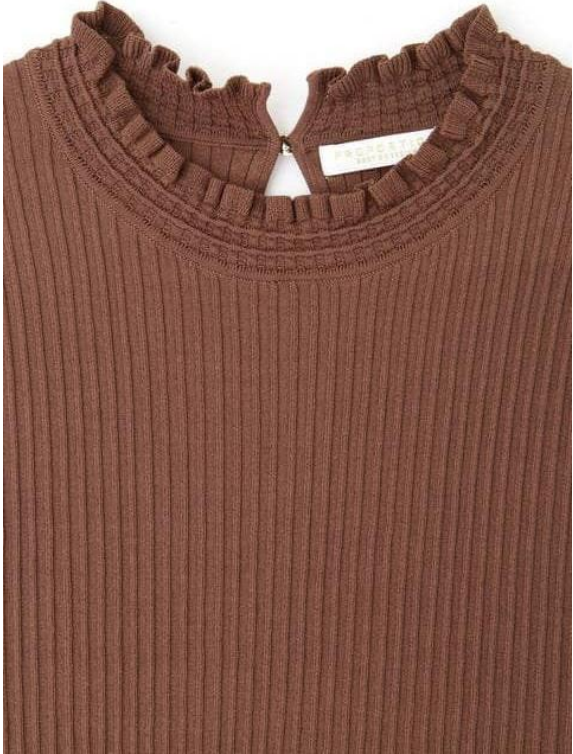


Bomber Jacket

SPRINGAIR



Ruffles & Lace Edgings



Ties



Deco Stitching



Cable New Look



Welts and Hems





END